



Geography Year 6 Autumn 1 - USA

Big Question: Why do geysers erupt?

North America



Vocabulary



Mississippi River



Mount Denali

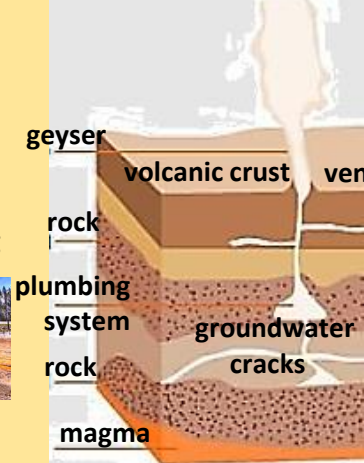


geyser erupting



geyser before erupting

water and steam shoots out



rainforest



tundra



taiga

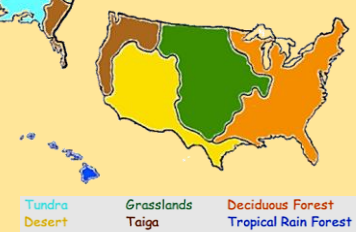


deciduous forest



desert

Biomes of the United States



What do I already know?

- Year 5 Summer 2:
- A river is freshwater flowing down and across the surface of the land to the sea.
- Rivers begin at their source - high points in hills or mountains.
- They are then joined by streams and rivers at tributaries.
- They then flow in a winding course called meanders.
- Rivers end their journey at their mouth or delta by reaching a lake, sea or an ocean.
- A water cycle is the journey water takes, from land to the sky and back again. There are four stages:
- Evaporation: Heat from the sun causes water in oceans, lakes, rivers etc to evaporate and rise into the sky. The water vapour collects in the sky in the form of clouds.
- Condensation: As water vapour in the clouds cools down it becomes water again.
- Precipitation: Water falls from the sky in the form of rain, snow, hail, or sleet.
- Collection: Oceans, lakes and rivers collect water that has fallen.
- Water evaporates into the sky again and the cycle repeats.

Where is the USA?

- The USA is in the continent of North America.
- There are 23 countries in North America.
- The neighbouring countries are Canada and Mexico.
- The bodies of water surrounding the USA are: Pacific Ocean, Atlantic Ocean and the Gulf of Mexico.
- Washington DC (not a state) is the capital city.
- USA is made up of 50 states - The states of Alaska and Hawaii do not join to America's mainland.
- A biome is a region with similar climate, animals and plants.
- The biomes of USA are: deciduous forest, taiga, desert, grassland, tundra and rainforest.
- USA has a continental climate: cold winters (often frigid) and hot summers (sometimes very hot).
- The longest river is the Mississippi - 3778km.
- Mount Denali (Alaska) is the highest point - 6194m.
- Two main mountain ranges in the USA are the Appalachian Mountains and the Rocky Mountains.
- Yellowstone National Park contains thousands of hot springs and approximately 500 geysers.

What are geysers?

- There are about 1000 geysers around the world – half of these are in the USA.
- Geysers are clustered near active volcanic areas like Yellowstone National Park in Wyoming, USA.
- A geyser is a hot spring which shoots out water and steam at regular intervals and at great height.
- Geysers are made in special geological conditions:
- 1) Heat from magma near the surface of the earth is needed to boil the water.
- 2) Water, that erupts, must be able to travel underground through deep, high-pressure cracks in the earth's crust.
- 3) Plumbing system, made up of fractures, fissures and cavities (holes), that is able to hold the water while it is being heated.
- Surface water usually goes down to about 2000 metres in the earth and mixes with hot rocks.
- This water begins to boil and the pressure increases.
- The pressure causes hot water and steam to burst out of the geyser vent.



Geography Year 6 Autumn 2 - Ireland

Big Question: How did the Skellig Islands come to be?

rock landform

Skellig Michael

Island
tourism



Old Red
Sandstone



slate



Shannon
longest river



Macgillycuddy's
Reeks mountain

Little Skellig

Island
crag
drift



Carrauntoohil
highest point

Vocabular



weathering erosion deposition



Biome:
temperate
deciduous forest

Map of British Isles



What do I already know?

- Year 5 Autumn 2:
- The earth's surface is made up of large pieces of land called tectonic plates, that move slowly.
- Pangea was a supercontinent 225 million years ago and India was a large island off the coast of Australia.
- 200 million years ago Pangea began to break up due to tectonic plate movement.
- The movement of the Indian tectonic plate caused the island of India to drift northwards towards Asia.
- The Indian plate then collided with the Eurasian plate forcing one piece of land underneath the other.
- This lifted the piece of land on top higher, pushing it upwards and eventually forming a mountain.
- The shifting that formed the Himalayas began 50 million years ago and continues today.

Where is Ireland?

- The Republic of Ireland is part of the British Isle and in Europe.
- The neighbouring country is Northern Ireland.
- The bodies of water surrounding Ireland are the Atlantic Ocean, Celtic Sea and the Irish Sea.
- The capital of Ireland is Dublin.
- The longest river in Ireland is Shannon.
- The highest point in Ireland is Carrauntoohil.
- A biome is a region with similar climate, animals and plants.
- Ireland's biome is temperate deciduous forest.
- The Skellig Islands are in the Atlantic Ocean.
- Skellig Michael is 12km off the coast of Portmagee in Ireland.
- They are made up of two crags (rocky hills or mountains) - Skellig Michael and Little Skellig.
- The name "Skellig" comes from a Gaelic word meaning "rock in the sea".
- Skellig Michael is made up of two types of rock: Old Red Sandstone and compressed slate.
- Nobody lives on Skellig Michael.

How were the Skellig Islands formed?

- Tourists can visit and spend 2 ½ hours exploring an old monastery and bird wildlife.
- Visitors climb around 600 steep, uneven steps to reach the summit (top) of the island.
- The highest point of Skellig Michael is called the Spit and is 218m above sea level.
- Some rocks broke away from the Macgillycuddy's Reeks mountain range in Ireland around 270 million years ago.
- Over the years, these rocks were set adrift and were surrounded by rising water levels.
- These rocks are now called the Skellig Islands.
- This happened because of weathering, erosion and deposition.
- Weathering is the process of the wearing away of rocks.
- Erosion is a process of the movement of the broken pieces of rock away from the site of weathering.
- Deposition is the process of the broken pieces of rock being transported to a new locations to create new landforms.

Vision: We show curiosity about our world and understand our responsibility towards it.

Geography Year 6 Spring 1 - Japan

Big Question: What can Japan teach us about preparing for a disaster?



Asia Japan



DIVERGENT BOUNDARIES



plates divide, pulling apart and leaving a gap

Volcanoes

CONVERGENT BOUNDARIES



plates collide and push against each other

Mountains & Ocean Trenches

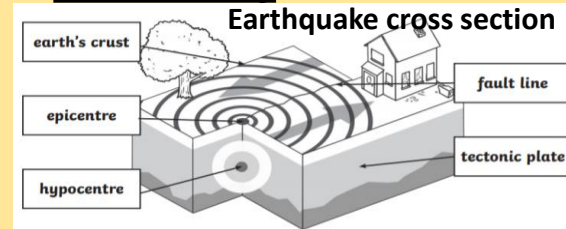
TRANSFORM BOUNDARIES



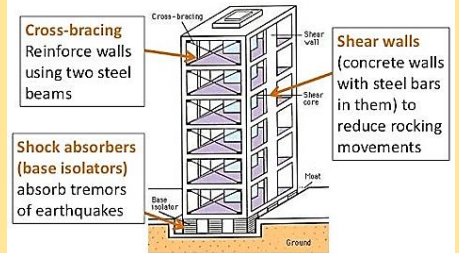
rocks along a fault break and slide past each other

Earthquakes

Vocabulary



Earthquake resistant buildings



Mount Fuji



River Tone



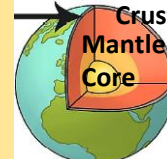
Biome - forest



Earthquake



Tsunami



Earth's layer

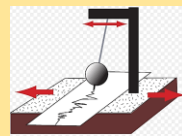


Tectonic plates

If An Earthquake Shakes You



Disaster plans



Seismograph

What do I already know?

- **Year 5 Spring 2:**
- Mount Vesuvius is a volcano located on the west coast of Italy 9km from the city of Naples.
- Vesuvius is the only active volcano on mainland Europe.
- It is famous for the eruption in 79 AD that destroyed the Roman cities of Pompeii and Herculaneum.
- Mount Vesuvius last erupted in 1944 during the Second World War, destroying an airbase and three villages.
- Mount Vesuvius is a stratovolcano.
- Stratovolcanoes have a pyroclastic flow - very hot ash, lava fragments and gases - that flow at great speed - 240km ph.
- Stratovolcanoes create highly explosive eruptions, rising high into the atmosphere.
- The lava (molten hot liquid rock) is highly viscous (thick consistency) so it cools and hardens before it travels far.
- Mount Vesuvius was formed because the African and Eurasian tectonic plates collided, causing the African plate to tear and sink down into the Earth's mantle.
- Pressure and temperature built up in the Earth's mantle.
- The Earth's mantle melted and magma formed. This magma (gases and hot liquid) pushed upwards to the surface through the tear and then the volcano's vent.

Where in the world is Japan?

- Japan is in the continent of Asia.
- Japan is surrounded by the Pacific Ocean and Sea of Japan.
- Japan does not neighbour other countries.
- Japan is made up of 6852 islands.
- The five main islands are Hokkaido, Honshu, Shikoku, Kyushu and Okinawa.
- Honshu is the largest island and is called Japanese mainland.
- The capital city is Tokyo (on Honshu island).
- A biome is a region with similar climate, animals and plants.
- Japan's biome is forest.
- The highest point is Mount Fuji - 3776m.
- The longest river is the River Tone - 322km.

What makes up an earthquake?

- **Fault line:** fracture in the rocks (earth's crust).
- **Epicentre:** point at the surface of the earth above the focus.
- **Plates:** massive rocks whose movement along faults triggers earthquakes.
- **Seismic waves:** transmit the energy released by an earthquake.
- **Hypocentre:** The point within the Earth where an earthquake rupture starts.

How Japan prepares?

- Japan is located near four tectonic plates and experiences many earthquakes.
- By measuring earthquakes and their impact using seismographs.
- By monitoring earthquakes so people can be warned.
- By government drawing up disaster plans which are advertised.
- By training emergency services on how to reduce damage, death and injury.
- By strengthening roads and railways.
- By making earthquake resistant buildings with shock absorbers, shear walls and cross bracing.
- Also buildings are strengthened so they move in the opposite direction to an earthquake, are more flexible when moving, reducing the impact.

Vision: We show curiosity about our world and understand our responsibility towards it.



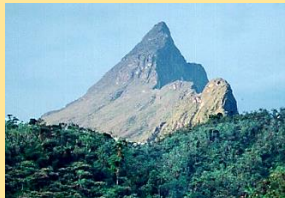
Geography Year 6 Spring 2 - Brazil

Big Question: Who gains and who loses from deforestation?



Biome - tropical rainforests

Amazon



Pico da Neblina



Agricultural expansion



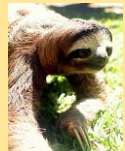
Infrastructure expansion



Logging



The capital city of Brazil is Brasilia.



Sloth



Red-eyed tree frog



Scarlet macaw



Orang-utan



Livestock ranching



Overpopulation



Deforestation

What do I already know?

Year 4 Summer 2:

- Syria is in the continent of Asia.
- The Mediterranean Sea is to the west of Syria.
- Syria is bordered by Turkey, Lebanon, Israel, Iraq and Jordan.
- The capital of Syria is Damascus.
- Syria's biome is mostly desert with a climate of hot, dry, summers and mild, rainy winters.
- Desertification happens when fertile land turns into desert.
- Desertification happens because of:
- Climate change - dry conditions due to rising temperatures cause vegetation (plants) to die, especially during drought.
- Logging - trees and bushes are stripped away for firewood and timber.
- Overgrazing - animals eat away grasses and erode topsoil with their hooves.
- Intensive farming - reduces the nutrients in the soil.
- Population growth - more pressure is placed on the land for growing crops.
- The effects of desertification are: Soil erosion and loss of soil nutrients, Crop failure which leads to famine, Fewer plant and animal species, People are forced to migrate.

Where is Brazil?

- Brazil (fifth largest country) is in South America.
- Brazil borders ten countries: Argentina, Bolivia, Colombia, French Guiana, Guyana, Paraguay, Peru, Suriname, Uruguay, and Venezuela.
- The Atlantic Ocean is to the east coast of Brazil.
- Brazil is the only country in the world that has the Equator and the Tropic of Capricorn running through it.
- The climate varies from hot and dry in interior to humid and sticky in the tropical rainforests.
- A biome is a region with similar climate, animals and plants.
- Brazil's biome is tropical rainforest.
- The highest point in Brazil is Pico da Neblina – 2,994m.
- The Amazon River is the longest river – 6852km.
- The Amazon, world's largest rainforest, is in Brazil.
- Rainforests keep the weather system stable; absorbing carbon dioxide, creating rainfall and maintaining temperature.
- Rainforests produce around 40% of the world's oxygen.
- 25% of natural medicines and half of anti-cancer plants have been found in rainforests.
- Rainforests contain more 20% of the world's freshwater.
- 50% of all the plants and animals live in rainforests.

Why are we losing rainforests?

- 20% of the Amazon biome has already been lost
- 36 football fields of forests destroyed every minute, killing 135 of animals, plants and insects a day.
- Agricultural expansion - palm oil and soybean products are in demand, driving producers to clear forests.
- Livestock ranching - a strong global demand for beef, means clearing forests for cattle grazing.
- Logging – trees are cut for timber. 80 % of this business is carried out by organised criminals, making around 10 thousand million pounds per year.
- Infrastructure expansion – new roads are built giving access to remote areas. The Inter-oceanic Highway runs from Brazil to Peru and is 5404 km long.
- Overpopulation – increase in the number of people means the need for more areas to live in and housing.
- Don't buy: products made of hardwood, products containing palm/soya bean, beef from rainforest areas.
- Do: go paperless, recycle paper, buy recycled items, buy products with Rainforest Alliance certification on, go meatless and plant a tree.



Geography Year 6 Summer 1 - Slovakia

Big Question: Are there ever any benefits of migration?



Bratislava



Biome - temperate coniferous forest



Gerlachovský Peak - Tatra Mountains



Váh River

Vocabulary



asylum seekers



Rita Ora - singer refugee from Kosovo



migration



Prince Philip immigrant



pull factors

A person who has been forced to leave their country in order to escape war, persecution, or natural disaster.



push factors



Europe

Slovakia

What do I already know?

- Year 3 Spring 1:
- Stonehenge is in Salisbury in the county of Wiltshire, England.
- Salisbury is on the Salisbury Plain - an area of chalk down land with gently rolling hills and chalk pits but very few trees and hedgerows.
- 93% of the land on Salisbury Plain is made up of chalk (a very pure and soft form of limestone).
- The rest of the land is made up of a small amount of clay, silt, sand and sandstone.
- The land is arable. This means it is fertile and very good for growing crops like wheat.
- The land is used for farming cattle and sheep.
- The River Avon and River Bourne run through Salisbury Plains.
- By the Neolithic period (late Stone Age), farming allowed people to settle down in the Salisbury Plain.
- Cresswell Crags is a gorge with limestone cliffs, on the border of Derbyshire and Nottinghamshire in England.
- In the Palaeolithic period (Old Stone Age) people arrived at Cresswell Crags following herds of reindeer, bison, mammoths and horses.

Where is Slovakia?

- Slovakia is in the continent of Europe.
- The countries that border Slovakia are: Czech Republic, Austria, Hungary, Ukraine and Poland.
- Slovakia is landlocked - surrounded by land.
- Bratislava is the capital city of Slovakia.
- A biome is a region with similar climate, animals and plants.
- The biome is temperate coniferous forest with evergreen trees that have needles.
- There are two seasons: summer is warm and humid and winter is cold, cloudy and snowy.
- The terrain is rugged with mountains, lakes and valleys in the centre and north, and low, flat lands in the south.
- The highest point is Gerlachovský Peak - 2665m in the Tatra Mountains.
- Váh is the longest river - 403km.
- The population of Slovakia is 5.5 million.
- 2% of Slovakia's population is Romani (Roma).
- The Romani people originated from the regions of Rajasthan, Haryana, and Punjab in northern India.

Why do people migrate?

- Human migration is the movement of people from one place to another to settle permanently or temporarily.
- Push factors force people to leave their own country.
- Push factors include: poverty, war or conflict, lack of opportunity, poor education, lack of medical care, corrupt governments, persecution and lack of religious or other freedom.
- Pull factors attract migrants towards their new country.
- Pull factors include: economic opportunity and jobs, safety and security, higher standard of living, low cost of living, good quality medical care, religious and other freedom, fair government, climate, good quality of education, family and love.
- The benefits to the new country include a richer and more diverse culture, reduction in labour shortages, and filling of low paid, low skilled jobs.
- The disadvantages to the new country include increasing cost of health care and education services, overcrowding and disagreements between different religions and cultures.



Geography Year 6 Summer 2 - Ghana

Big Question: What is the point of Fairtrade?



Volta River



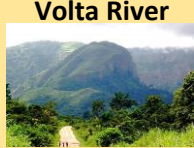
Lake Volta



cocoa pod



cocoa beans



Mount Afadjato



Akosombo Dam

land use
agriculture

savannah



tropical forest



cocoa tree



cocoa farmer

Vocabulary

Fairtrade
chocolateFairtrade
Cooperativeexporter
trade links

West Africa



Africa

54 countries

What do I already know?

- Year 4 Spring 1:
- China is an 'emerging country' that is getting richer.
- China used to make its money mainly from agricultural production – farming crops and animals.
- China has seen massive growth in manufacturing - making items on a large scale using machinery.
- It is the largest exporter in the world - sends goods to another country for sale.
- China is able to produce on a mass scale as it has lots of giant factories.
- China has lots of highly-skilled workers, who are used to working hard for long hours.
- China can pay their workers little because there is no minimum wage.
- Health and safety laws are relaxed so companies do not have to spend lots of money on safety.
- China has a massive demand for products to be sold domestically due to its very large population. As the Chinese people earn more, they spend more.

Where is Ghana?

- Ghana is in the continent of Africa.
- Bobowasi Island off the west coast of Africa is part of Ghana.
- The body of water to the south is the Gulf of Guinea.
- Ghana is bordered by three countries: Ivory Coast, Burkina Faso and Togo.
- The capital city of Ghana is Accra.
- Ghana's climate is tropical: warm and dry along the southeast coast; hot and humid in the southwest; hot and dry in the north.
- A biome is a region with similar climate, animals and plants. The two major biomes in Ghana are tropical forest (south) and savannahs - tropical grasslands (north).
- The highest point is Mount Afadjato 880m.
- Volta is the longest river in Ghana – 1500km
- Akosombo Dam (a large barrier) flooded part of the Volta River Basin, creating Lake Volta - the world's largest artificial reservoir (store of water supply).
- Ghana's main exports are gold, cocoa beans and timber products. Others include tuna, aluminum and diamonds.
- Ghana's main exports partners are the Netherlands, Burkina Faso, South Africa and United Kingdom.

What is Fairtrade?

- The quality of cocoa beans from Ghana is ranked number one in the world.
- Ghana and Ivory Coast produces 60% of the world's cocoa.
- In 2019, Ghana produced 900,000 tonnes of cocoa beans.
- In the UK, the chocolate industry is worth £4 billion.
- Very little of that money gets back to the farmers.
- The average farmer will make £3 to £4 a day so farming families live in poverty (poor).
- Fairtrade Cooperative sets a Fairtrade Minimum Price so the price of cocoa will never drop below a certain price.
- Farmers know they can cover the costs of production.
- The farming community also receives the Fairtrade Premium - some money to spend on projects that will benefit their communities or businesses.
- These could be for: installing taps for clean water, buying trucks to help the farmers transport the cocoa beans, setting up large warehouses to store cocoa beans, launching radio stations so that farmers in remote areas can access information and training, rebuilding damaged school buildings, building nursery schools so young children can go to school instead of working on the farms.