



# Newsletter

November 2025



## WELCOME



Dear Parents and Carers,

What a vibrant and joy-filled start we've had to Autumn 2. These first three weeks have been a wonderful showcase of everything that makes our school community so special: curiosity, creativity, determination, and a genuine love of learning. As the days grow shorter, our children have certainly brought the light - through their hard work, their kindness and the many moments of awe and wonder unfolding across classrooms.

In Year 3, the countdown to Christmas has truly begun. Rehearsals for the Christmas Concert are already filling the hall with music and excitement, and the children are embracing every note. Alongside this, we are incredibly proud of the progress they are making in swimming, with many pushing confidently towards their 25m award. Their Victorian Day was a huge success: a brilliant blend of role play; history and hands-on learning. Plus, in science they have been exploring friction, eagerly testing how different vehicle designs move across various surfaces.

Year 4 have been demonstrating growing maturity and independence, particularly during assessment week, where they showed resilience and focus. Their science lessons have been fizzing with fun as they've experimented with solids, liquids and gases. And, of course, violin lessons have been very popular. The enthusiasm (and improving tuning!) has been lovely to see.

In Year 5, tag rugby has been a real hit, with teamwork and sportsmanship shining through each session. Their class text, 'Winter of the Wolves', has sparked imagination and discussion, leading to some beautifully written diary entries. Meanwhile, TT Rockstars has brought out a competitive fire, with tournaments that require lightning-fast recall and even faster fingers.

Our Year 6 pupils have stepped into the half-term with impressive maturity. During Mini Police fitness testing, several children even reached the official PCSO fitness standard – a fantastic achievement. We were pleased to welcome so many families to the SATs parent meeting, and the thoughtful, respectful discussions during their 'growing and changing' lessons are evidence of why we see them as Pear Tree role models.

Beyond the classroom, our playground is transforming into a special place – a buzzing hive of imaginative and active play. Whether it's bubble blowing, cricket, tennis, basketball, small-world adventures, teddies and talk, balancing, climbing, or a whole range of child-led games, there is something for everyone. The joy and creativity on display each lunchtime is an absolute highlight.

Thank you for your continued support - we look forward to seeing you at our upcoming events!

Warm regards,

Mrs Collins  
Head of School



with trust & care we will grow & flourish

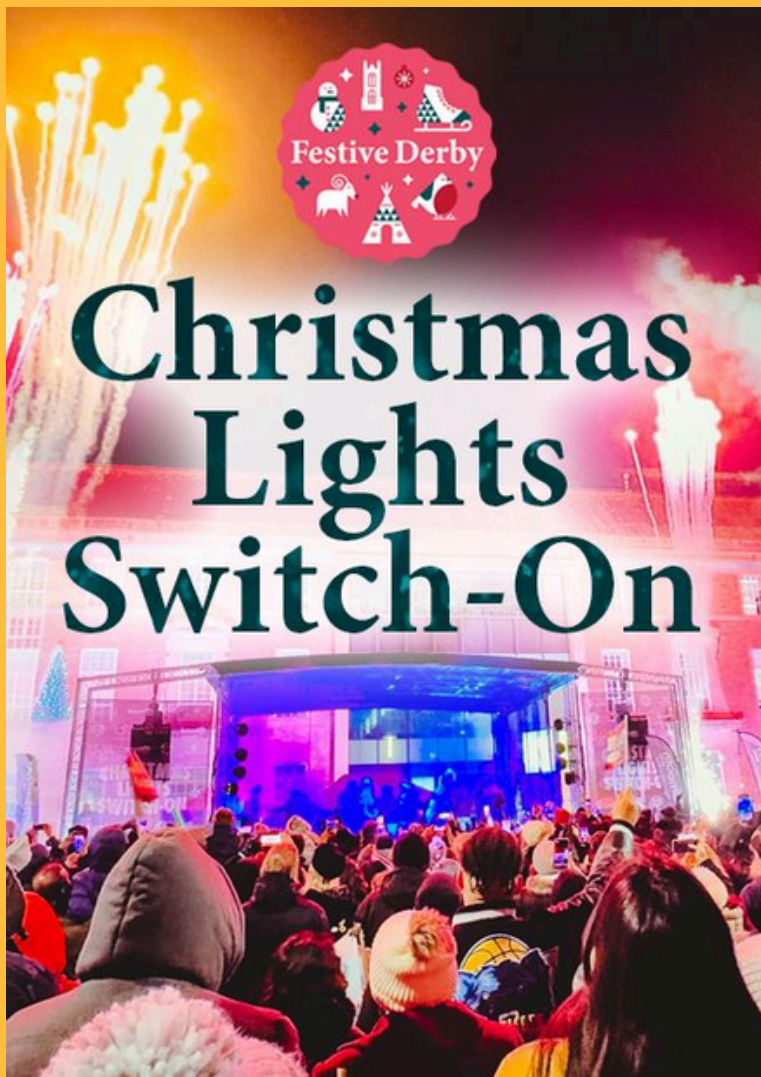


# Newsletter

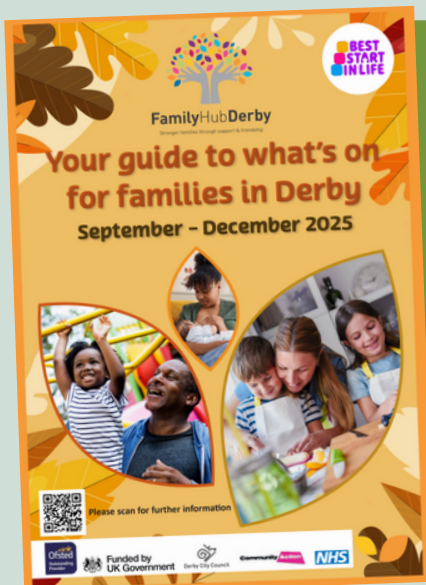
November 2025



## LOCAL OPPORTUNITIES



Tomorrow, Thursday 27th November, is Derby's Christmas Light Switch-On. An evening of **free** entertainment for the whole family. The evening begins at 5pm with a **Lantern Parade** through the City Centre. Starting at **St Peter's Church Yard**, some of our pupils will be taking part. Come join us!



Get the advice and support you need whilst having fun as a family! Derby's Family Hubs are there to welcome you and your family to find the help you need through support and friendship. They offer a range of free activities, sessions, advice and support for families and young people aged from 0-19 years and up to 25 years for young people with Special Educational Needs and Disabilities.

[Latest Guide.](#)

with trust & care we will grow & flourish



# Newsletter

November 2025



## LOCAL OPPORTUNITIES

Scouts and Girlguiding groups across Derby offer children and young people - typically from ages 4 to 18 - so much more than a weekly activity. From the youngest Squirrels and Rainbows to older Scouts, Guides and Explorers, every stage provides new opportunities to explore, grow and feel part of something meaningful.

Children can take on outdoor challenges, creative projects, community action and leadership tasks, all within a safe, supportive environment. These experiences help them build confidence, resilience and independence, encouraging them to discover what they're capable of. Whether it's learning practical skills, taking part in local events or simply enjoying time with friends, each session nurtures a strong sense of belonging and personal growth.

With dedicated volunteers and a thriving local network, Scouts and Girlguiding in Derby provide an inclusive, rewarding space where young people can truly thrive.

# ADVENTURE AWAITS



Girlguiding



Scouts

[Click to find a local club for your daughter:](#)

[Click to find a local club for your son or daughter:](#)

with trust & care we will grow & flourish



# Newsletter



November 2025

## LOCAL OPPORTUNITIES

Artcore is a visual arts charity encompassing an art gallery, artistic studios, a shop, and a cafe. The gallery is a vibrant hub for contemporary art nationwide, hosting group exhibitions and private events year-round. It is a lively community hub dedicated to supporting and collaborating with local communities. Have a look at 'what's on' for you and your children. Book your free place.



**Artcore**  
**HOME AWAY FROM HOME**  
 A creative art project bringing people together

A welcoming art project for people from all walks of life from diverse background who have made Derby their home.

**Thursdays - 1:30pm to 3.30pm**  
 (Starting from 23rd October)

Venue: Artcore - 3 Charnwood Street, DE1 2GT

LOTTERY FUNDED




**Artcore**  
**CHAMPIONS FOR CHANGE**

**FREE ART WORKSHOPS!**  
**AGES 8 - 15**

EVERY SATURDAY (TERM-TIME) 11 AM - 1 PM  
 ARTCORE 3 CHARNWOOD ST DE1 2GT

TO BOOK VISIT: [ARTCOREUK.COM/WORKSHOP-BOOKING](http://ARTCOREUK.COM/WORKSHOP-BOOKING)  
 OR CALL: 01332 384561

ARTCORE COMMUNITY HUB  
 3 CHARNWOOD STREET  
 DERBY - DE1 2GT

CHILDREN IN NEED



**Artcore**  
**YOUR SPACE MY SPACE**

**FREE CREATIVE ART WORKSHOPS**

As part of CANVAS - a city wide project, inspiring future generations

**AGES 8 - 15**  
**EVERY THURSDAY**  
**4:30PM - 6:30PM**

**ARTCORE COMMUNITY HUB**  
**3 CHARNWOOD ST**  
**DE1 2GT**

TO BOOK: 01332 384561  
 OR [ARTCOREUK.COM/WORKSHOP-BOOKING](http://ARTCOREUK.COM/WORKSHOP-BOOKING)

CANVAS ARTS COUNCIL ENGLAND



Bricktastic! Get the Lego Magazine. This printed magazine is sent to your home 4 times a year. Completely free of charge!

Sign up now to receive the next issue in: April 2026

Sign-up here.



with trust & care we will grow & flourish



# Newsletter

November 2025



## HAF

**inspire FITNESS ACADEMY** **HAF** Holiday Activities & Food

**MULTI-SPORTS**

**BOXING** **FOOTBALL**

**SCHOOL HOLIDAY CLUB**

22nd, 23rd, 27th, 28th DECEMBER  
AGES 4-16 | 9:30AM-1:30PM

**FREE** FOR QUALIFYING FAMILIES **LUNCH INCLUDED** **£10 PER CHILD** FOR NON-QUALIFYING FAMILIES

HARRINGTON ST, PEAR TREE, DERBY DE23 8PB  
FOR MORE INFORMATION 07546 161805

## NOTICES



**Christmas Craft** afternoon for families, Friday 5<sup>th</sup> December from 2:15 to 3:15pm. Come and create!



Many European countries celebrate St. Nicholas Day, on 6th December, to mark the start of the Christmas holiday season. Children who have been good wake up on this day to find candy and presents in their shoe left by St. Nicholas.

## ONLINE SAFETY

Please make sure your child is safe online. We are having an increasing amount of online incidents at home which are being brought into school.

If you are concerned about messages online, please contact school or phone the police if necessary.

**S** Speak to somebody if you need help

**A** Ask an adult before going online

**F** Friends are real people we know

**E** Enjoy play, have fun and stay safe

e-safety adviser

**Stay safe online**

Quality First Education Tr

with trust & care we will grow & flourish



# Newsletter

November 2025



## OPAL

We believe play is essential to every child's growth, health, happiness, and learning. Through the OPAL (Outdoor Play and Learning) principles, we are creating a rich, inclusive, and sustainable play environment that evolves over time and promotes a wide variety of play. Ask your child about the exciting upcoming changes and visit our [OPAL website page](#) for more information. **For all weather play, please ensure your child has a waterproof coat with a hood and a pair of wellies.**



## ATTENDANCE

### A Graduated Approach for Parents/Carers:

#### Tier 1

- Building positive relationships with school
- Helping and encouraging your child to attend school regularly and be on time
- Understand and support any concerns your child may have.
- Recognise personal achievements and value education
- Communicate with teachers about any concerns.



#### Tier 2

##### EBSNA Toolkit for families

- Activities to try at home
- Work with the school to help understand their child's barriers to attendance.
- Proactively engage with the support offered to prevent the need for more formal support.
- Continue to communicate effectively with the school regarding absence.



Have you spotted our pupil Attendance Ambassadors on the playground in the morning?

#### Need Support

If your child has had more than 5 days absent from school since September and you need support, please contact the school office, 01332 and a member of the Attendance Team will assist you.



with trust & care we will grow & flourish



# Newsletter

November 2025



## ATTENDANCE

Parents will.....	School will.....
Value their child's education and value the importance of excellent attendance.	Provide engaging lessons where all children want to attend.
<u>Absence.</u> Phone school on 01332 760610 if their child is absent by 8:50am and provide any evidence to support the absence e.g. hospital appointment card, doctor's appointment.	Record absences on the register with the correct code.
<u>Punctuality.</u> Make sure your child is on time. Gates open at 8:45am.	Offer breakfast club for children needing to be in school earlier and offer support in an emergency.
<u>Leave of Absence</u> Complete a leave of absence form request at least seven days prior to the absence and hand into the office.	Consider a request on an individual basis and inform parents by letter. School will contact Derby City Council.
School and parents will support children to be in school on time, every day. In the case of no communication, school will phone home or complete a home visit to support the family.	



Well done to classes: Derwent, Bakewell, Hardwick and Nightingale for best attendance since September.  
 Whole School attendance is 92.7%.  
 All schools are aiming for 96%.

✨ Attendance has been improving over the last three years ✨  
 Attendance has shown a rising trend over the past three years:

- 2022-23: Whole School attendance of 91.7%
- 2023-24: Whole School attendance of 91.8%
- 2024-25: Whole School attendance of 92.8%

This represents steady improvement and reflects stronger whole-school efforts on attendance.

Thank you to all our families for their increased engagement.

EVERY  
 is DAY is  
 for THEIR  
 FUTURE



with trust & care we will grow & flourish



# Newsletter

November 2025



## PARENTAL ENGAGEMENT

	Whole School Events	Parental Engagement Celebrations	Parental Engagement Curriculum and enrichment workshops
<b>December</b>	Disco at Pakistani Centre Recognition assembly Christmas Jumper Day December birthday celebrations	Christmas carol concert and festivities	Christmas Crafts Workshops 5th December - St Nikolas Day crafts (Mikulas)
<b>January</b>	January birthday celebrations		Maths Workshops and MTC - multiplication tables check
<b>February</b>	Children's Mental Health Week January and February birthday celebrations		Tea and toast - SEND/ mental health Internet workshops
<b>March</b>	World Book Day March birthday celebrations	Easter Workshop/Mother's Day - wellbeing focus Pancake day -4th March - breakfast club	Breakfast with a book Reading workshop
<b>April</b>	Recognition assembly April birthday celebrations	Vaisakhi Craft Workshop	Writing Workshop
<b>May</b>	May birthday celebrations		
<b>June</b>	End of school disco- Y6 Sports day and picnic June birthday celebrations OPAL Parent Stay & Play	Eid/Father's Day - Wellbeing focus Culture Day	
<b>July</b>	Transition week Recognition assembly July and August birthday celebrations		Tea and toast - SEND/ mental health Internet workshops

with trust & care we will grow & flourish