

Dear Parents / Carers

We have had a fantastic start to this academic year and our school community has continued to grow and flourish. Please take some time to read the Pear Tree Pride section on the next page which celebrates some of achievements from this half term. Thank you for your continued support , we look forward to continuing our work with you. Together we can achieve great things for our children.



Have a Happy Half Term and see you all on Monday 6th November.
Mrs Badwal (Acting Head of School)

Attendance Update

Please make sure that you are calling the school on **01332 760610** to **report your child as absent before the start of the school day at 8:50am**. Every day the attendance staff spend a lot of time calling parents of children who are not in.

I am really pleased to announce that **over 180 positive letters** have been sent this half-term to parents of children whose attendance is over 96%. Please keep this going! If you need any support in making sure your child is at school every day and ready to learn by 8:50am then please contact the school for support on the number above, we are here to help!

After school pick up/clubs

Only those children in year 5 and 6 are permitted to walk home at the end of the day IF permission has been given to the school office by a parent or guardian. Secondary school siblings are allowed to collect if this is the parent wish (3.25pm)

On our return after half term we will require parents / guardians to collect children after clubs. (4.30pm) We will not permit children to walk home in the dark on their own. This will continue now until the spring term.

Uniform

It is important that your child has the correct uniform and PE kit for school.
Our expectations are shown below.

Uniform

Look smart: Be the part

Your child is expected to wear uniform everyday

Wearing uniform will give you a sense of belonging and pride



PE Kit

Get fit and wear your kit!

Your child should wear school PE kit on their PE days. This should be blue, white and black!



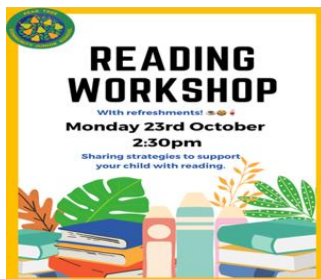
Pear Tree Pride



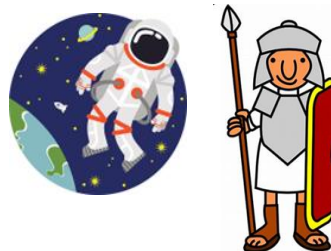
We raised £163.80 in our bake sale to go towards Cancer Support. Thank you to all parents/carers for your support.



Thank you to our Parents and Carers who attended our SEND 'meet the team' event. We appreciate your continued support.



We had great attendance at our reading workshop. Maths and Writing workshops will follow. We look forward to continuing to working together to get the best outcomes for our children,



Trips/experiences

Y5 really enjoyed their trip to the Space Centre this half term.

Y4 had a fantastic Roman Day which included pottery making, a visit to an amphitheatre, gladiator training & Latin lessons!



Well done to the PTCJS Footballers for all the matches they have played this half term. We are super proud of how well they are playing and particularly the great feedback they have received.

Dates for this term

| | |
|----------|--------------------------------|
| 06.11.23 | Back to school |
| 09.11.23 | Diwali workshop Year 3 and 4 |
| 10.11.23 | Diwali workshop Year 5 and 6 |
| 13.10.23 | Anti Bullying Week |
| 17.10.23 | Children In Need Day |
| 14.11.23 | Year 3 Pupil Progress Meetings |
| 15.11.23 | Year 5 Pupil Progress Meetings |
| 16.11.23 | Year 6 Pupil Progress Meetings |
| 22.11.23 | Year 4 Pupil Progress Meetings |

Festive Workshops for Parents/Carers

| | |
|----------|---------------------------------|
| 11.12.23 | Y4 Festive Workshop |
| 12.12.23 | Y5 Festive Workshop |
| 13.12.23 | Y6 Festive Workshop |
| 14.12.23 | Y3 Festive Workshop |
| 18.12.23 | Y3 Nativity |
| 19.12.23 | Y3 Nativity |
| 19.12.23 | Christmas Dinner and Jumper Day |
| 22.12.23 | Last day of school |



Dates for the Future

| | |
|----------|---|
| 06.11.23 | Start of Autumn 2 |
| 22.12.23 | End of Autumn Term 2 |
| 08.01.24 | Start of Spring Term 1 |
| 16.02.24 | End of Spring Term 1 |
| 26.02.24 | Start of Spring Term 2 |
| 28.03.24 | End of Spring Term 2 for pupils |
| 15.04.24 | Start of Summer Term 1 |
| 24.05.24 | End of Summer Term 1 for pupils |
| 06.05.24 | Bank Holiday – School Closed |
| 03.06.24 | INSET – School closed for pupils |
| 04.06.24 | Start of Summer Term 2 |
| 19.07.24 | Last day of school |
| 22.07.24 | INSET – School closed for pupils |
| 23.07.24 | INSET – School closed for pupils |