

Year 3

Year 3
Autumn 1

Physical Geography Year 3 Autumn 1 – Longitude, latitude and Scotland

What has latitude got to do with day and night in the Shetlands?



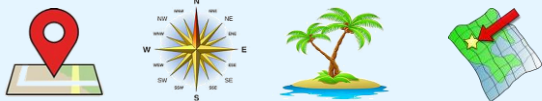
Where are the Shetland Islands?

Scotland is part of the UK and it is in Europe. We could get to Scotland by car.

Scotland has 790 islands but only 130 have people living on them.

The Shetland Islands are located in the northern part of Scotland, off the northeast coast. We would need a boat to get to this island.

They are situated in the North Atlantic Ocean.



To explore longitude and latitude

Longitude is a way to measure distance east or west of the Prime Meridian, an imaginary line that runs from the North Pole to the South Pole.

Latitude is a way to measure distance north or south of the Equator, another imaginary line that divides the Earth into two equal parts.

They are measured in degrees.



Finding the Shetlands on a map

To find the Shetland Islands on a map:

1. Look for the United Kingdom (UK) on the map.
2. Locate the northern part of Scotland.
3. The Shetland Islands are a group of islands northeast of Scotland.

North, East, South, West are all directions.



How latitude impacts the Shetlands

Latitude impacts the Shetlands in a few different ways:

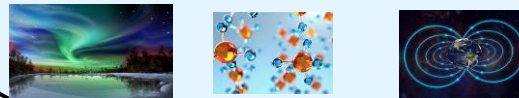
1. Day and Night: Shetland's latitude, which is quite high, means that its daylight hours change throughout the year. In summer, they experience long days. In winter, the islands have longer nights

2. Seasons: Latitude also influences the seasons experienced in the Shetland Islands. Being located far north, Shetland has a cooler climate compared to more southern regions of the UK. This means that the islands have cold winters and relatively mild summers.



The Northern lights in Scotland

Northern Lights: The latitude of the Shetlands gives them a higher chance of experiencing the Northern Lights, also known as the Aurora Borealis. These breathtaking natural phenomena occur when charged particles from the sun interact with the Earth's magnetic field, producing vibrant displays of lights in the sky.



Where else is impacted by latitude?

Other places around the world are impacted:

The Arctic Circle: This is an imaginary line of latitude located near the North Pole. Areas within the Arctic Circle experience phenomena such as the Midnight Sun (continuous daylight during summer) and Polar Night (continuous darkness during winter).

The Tropics: The Tropics are located near the Equator. These regions have relatively consistent temperatures throughout the year, with little seasonal variation.

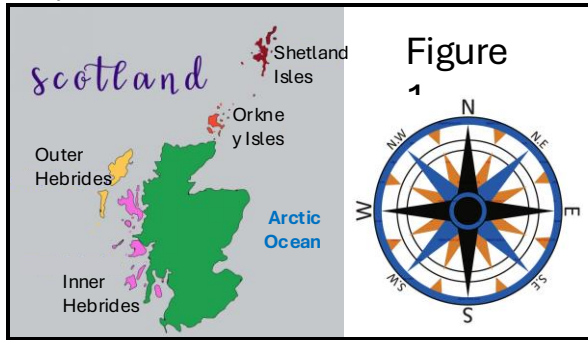


Vision: We show curiosity about our world and understand our responsibility towards it.

Geography Assessment

Term _____
Year _____
Name _____

Study figure 1 (A map to show the location of the Shetland Isles).



a) Locate Shetland Isles on the map and circle it.
b) Using figure 1 to help, which part of Scotland are the Shetland Isles located?

_____ [2 marks]

2. What ocean surrounds the Shetland Isles?
_____ [1 mark]

3. What is longitude and latitude measured in?
_____ [1 mark]

4. What continent is Scotland in?
_____ [1 mark]

5. Why can you see the Aurora Borealis in Scotland?

_____ [1 marks]

6. Name 2 places that are impacted by latitude. Use figure 2 to help you.

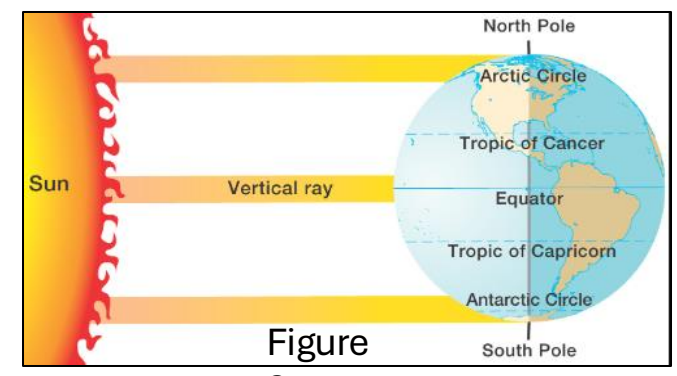


Figure 2

_____ [2 marks]

7. Name two ways the Shetland Isles are impacted by latitude.

_____ [2 marks]

END OF ASSESSMENT

/10

Year 3
Autumn 2

Human and Physical Geography Year 3 Autumn 2 – Wales and Tourism

What makes a great tourist destination?



Where is Llandudno?

Llandudno is a seaside town in Wales. It is situated in the County Conwy. Wales is in the UK and has the River Severn, the longest river in the UK, and Snowdon, the highest mountain in Wales. Wales has a temperate climate - it is mild, warm and sunny but not too hot. It is a car/train ride away from Derby.



What makes a tourist destination?

For a place to become a good tourist attraction it needs to be:

- Accessible – Llandudno became more accessible when trains were invented (during the Victorian Era).
- Attractions to see/do
- Affordable
- A good landscape



Natural attractions

The cliffs of Great Orme extend into the Irish sea. The summit of the Great Orme is 207m above sea level. There is also a smaller cliff called Little Orme which is a nature reserve. The sandy beaches and seaside environment appeal to visitors of all ages. There is also a vast amount of marine life and birdwatching opportunities.



Man made attractions

Tourists' travel here for leisure. Llandudno Pier is the longest pier in Wales. The pier has attractions and shows for visitors to enjoy. Since the Victorian Era, the fun of building sandcastles on the beach enticed visitors to explore and play. They also host other traditional seaside activities like donkey rides, enjoying ice cream and fish & chips.



Famous landmarks

The Great Orme Tramway. Cable cars were made so tourists could admire the views from the Great Orme. The Venue Cymru was a very important place for shows and entertainment to take place. Happy Valley Gardens is also a beautiful landmark tourists love to visit.



How Llandudno care for visitors

There are many tourism businesses and hotels that allow tourism to still thrive in Llandudno. Without this, tourism here would fail. Tourist destinations use tourist information centers to help guide tourists where to go. They also must think of safety at the beach (lifeguards, safety rules) They encourage people to be respectful visitors and keep Llandudno beautiful.

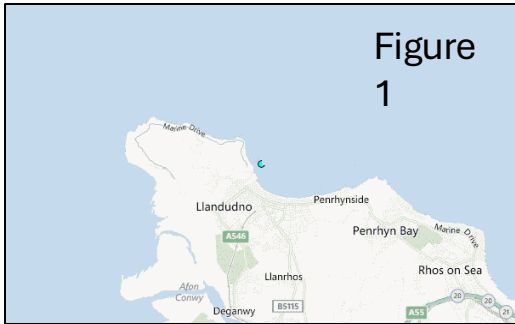


Vision: We show curiosity about our world and understand our responsibility towards it.

Geography Assessment

Term _____
Year _____
Name _____

Study figure 1 (A map to show the location of Llandudno).



- a) Locate Llandudno on the map and circle it.
- b) Using figure 1 to help, what type of town is Llandudno?

_____ [2 marks]

1. Llandudno is a great T_____ destination. [1 mark]

2. What era did tourism begin to thrive in Llandudno?
_____ [1 mark]

- 4. Name two tourist attractions in Llandudno.

_____ [2 marks]
- 5. Both figures (2 and 3) are great tourist destinations. What could make them great tourist destinations?



_____ [2 marks]

6. Why can tourism be good for a city/town or country?

_____ [2 marks]

END OF ASSESSMENT

/10

Year 3
Spring 1

Human and Physical Geography Year 3 Spring 1 – Climate change

How is Climate Change affecting the Arctic?



Where is the Arctic Circle?

The Arctic Circle is one of the five main circles of latitude on the Earth.

It is located in the northernmost part of the Earth, encircling the North Pole.

The Arctic Circle passes through eight different countries including Canada, Greenland (Denmark), Russia, Norway, Sweden, Finland, the United States (Alaska), and Iceland.



Arctic animals and habitats

The Arctic is home to various unique animals, adapted to survive in extreme cold temperatures.

Some examples of Arctic animals include polar bears, Arctic foxes, walruses, and seals.

These animals have thick fur or blubber to keep them warm, and they rely on the sea ice for hunting and resting.

The Arctic habitat includes frozen tundra, snow-covered landscapes, and icy waters.



Melting Ice and rising sea levels

Climate change is causing the Arctic ice to melt at an alarming rate.

The melting ice is leading to rising sea levels globally, which threatens coastal areas around the world.

This is caused by the increasing temperature as a result of greenhouse gas emissions from human activities.

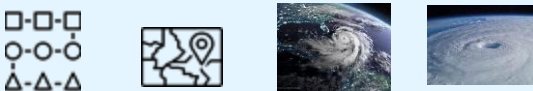


Change in weather patterns

Climate change is also affecting the weather patterns in the Arctic.

The region is experiencing more frequent and severe storms, including hurricanes and cyclones.

Warmer temperatures lead to changes in rainfall patterns and changes in wind direction.



Indigenous people and their lifestyles

The Arctic is home to indigenous people such as the Inuit, Yupik, and Sami.

These communities have a deep connection to the Arctic and rely on its resources for their traditional lifestyles.

Climate change is causing significant disruptions to their communities, including changes in hunting and fishing patterns, loss of traditional knowledge, and challenges in accessing resources.



Protecting the Arctic and Taking action

In order to protect the Arctic various actions can be taken: Reduce greenhouse gas emissions by using renewable energy sources and promoting energy efficiency. Support international agreements such as the Arctic Council. Educate and raise awareness about climate change and its impacts on the Arctic and the world. Encourage sustainable and responsible tourism practices in the Arctic region.

Collaborate with indigenous communities and listen to their knowledge and perspectives to inform decision-making.



Vision: We show curiosity about our world and understand our responsibility towards it.

Geography Assessment

Term _____
 Year _____
 Name _____

Study figure 1
 (A map to show the location of the Arctic Circle).

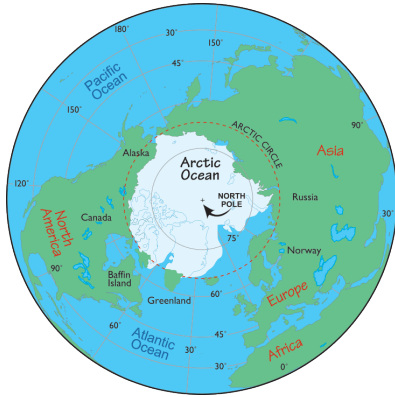


Figure
1

- a) Locate Arctic Circle on the map and circle it.
- b) Using figure 1 to help, what is in the center of the Arctic Circle?

[2 marks]

1. The Arctic Circle passes through _____ countries. [1 mark]

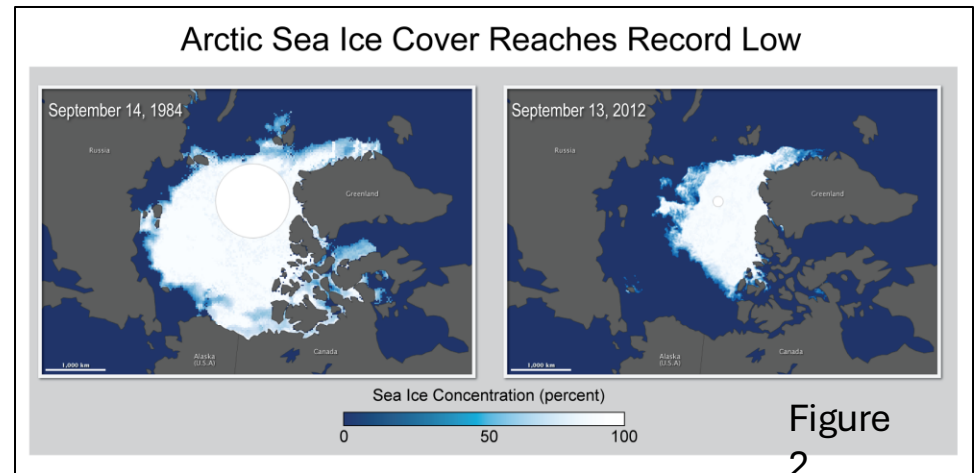
2. Name **two** animals that live in the Arctic.

[2 marks]

4. Name two impacts of climate change in the Arctic.

[2 marks]

5. Study figure 2. What do you notice about the difference between the Arctic Circle's sea ice in 1984 and 2012? Explain why the differences could have occurred.



[3 marks]

END OF ASSESSMENT

/10

Year 3
Spring 2

Human and Physical Geography Year 3 Spring 2 – Human impact and Australia

What threats are facing the Great Barrier Reef?



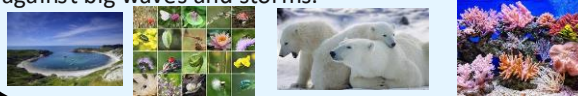
Where is the Great Barrier Reef?

Australia is in Australasia, the smallest continent. Australasia has 14 countries including New Zealand, Papua New Guinea and Fiji. Australia is the 6th largest country in the world. Australia's biomes are temperate forest, desert, savannah and rainforest. The climate is tropical (hot and humid) in the north and mild in the south. The Great Barrier Reef is located in the Coral Sea, Pacific Ocean, off the coast of Queensland in Australia.



What is the Great Barrier Reef?

The Great Barrier Reef stretches 2,300 kilometers along the coast of Queensland, Australia. It is one of the most biodiverse ecosystems in the world. It's home to over 400 types of coral, about 1,500 species of fish, and endangered creatures like the large green turtle. As an ocean structure, it also offers coastal protection against big waves and storms.



Threats on wildlife

The Great Barrier Reef faces several threats that impact its wildlife. Some of these threats include:
Coral bleaching - A change in temperature or nutrients that makes the coral turn white. The biggest impact on the reef and mainly caused by climate change.
Over fishing - The removal of fish quicker than it can reproduce
Pollution - Dangerous and harmful toxins are hurting the wildlife that live there.



Threats on their environment

Apart from wildlife, the Great Barrier Reef also faces threats that impact the overall environment. These threats include:
Ocean Acidification – A rise in acidity can have vital impacts on their wildlife as it can kill animals and coral.
Farming - Sediment, nitrogen and pesticide from nearby farms have flown into the reef, reducing water quality and encouraging algae growth.
Crown-of-Thorns Starfish – A spiky starfish that feeds off coral, reducing its numbers. A single starfish can wipe out large areas



Tourism impact

Tourism plays a significant role in the Great Barrier Reef, as it brings in a lot of money to help look after the Great Barrier Reef and provides 60,000 jobs for Australia but it also poses certain challenges and impacts:
Damage from Diving and Snorkeling – Humans can be reckless and damage the coral reef
Marine Traffic – More tourists increase the amount of boats around the great barrier reef, polluting more and more of the area.



Conservation and Preservation

Efforts are being made to conserve and preserve the Great Barrier Reef. Some measures include:
Marine Protected Areas (MPAs) - Areas protected with rules to stop overfishing, tourism and marine trafficking. This has increased the amount of fish in these areas.
Research and Monitoring Programs - To track how the MPA's are working and research how the Great Barrier Reef can be helped.
Education and Awareness – Teach humans the importance of saving the reef, reducing your own carbon footprint and respecting it.



Vision: We show curiosity about our world and understand our responsibility towards it.

Geography Assessment

Term _____

Year _____

Name _____

1. Study figure 1



Figure 1

- a) Locate The Great Barrier Reef on the map. 1
b) Using figure 1 what ocean is the Great Barrier Reef located?

_____ [2 marks]

2. The Great barrier reef is home to 1500 species of _____

[1 mark]

3. Name a threat that is impacting the Great Barrier Reef.

_____ [1 mark]

4. Name **one** thing that tourists can do that can damage the Great Barrier Reef.

_____ [1 marks]

5. Study figure 2 (a picture of the Great Barrier Reef in 2000 and 2020).



Figure 2

Which year does the Great Barrier Reef look better?

_____ [1 marks]

6. Explain why the Great Barrier Reef is changing and how we can help prevent it from getting worse.

_____ [4 marks]

END OF ASSESSMENT

/10

Year 3
Summer 1

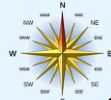
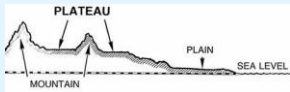
Human and Physical Geography Year 3 Summer 1 – Settlement and England

Why did Stone Age people settle in certain areas?



Where is Salisbury Plain?

Salisbury Plain is a vast chalk plateau located in the southern part of England. It is in the continent Europe. It is situated in the county of Wiltshire, approximately 80 miles southwest of London.



What is Salisbury Plain made of?

Salisbury Plain is predominantly composed of chalk, a soft, white, and porous sedimentary rock. Chalk is formed from the remains of microscopic marine plants and animals that lived millions of years ago in ancient seas.



What is Stonehenge?

Stonehenge is an ancient monument that lies within Salisbury Plain. It is believed to have been built around 5000 years ago in the late Neolithic period or early Bronze Age. The exact purpose of Stonehenge still remains unclear, but it is widely believed to have had significant religious or ceremonial importance for Stone Age people.



Why could they settle here?

Stone Age people chose to settle in certain areas, such as Salisbury Plain, for several reasons:

Resources: Salisbury Plain offered access to vital resources like wood, water, and fertile soil.

Hunting: The presence of diverse wildlife on Salisbury Plain provided Stone Age people with ample hunting opportunities.



Why else could they settle here?

Protection: The landscape of Salisbury Plain, with its rolling hills and open spaces, allowed for better visibility, making it easier for Stone Age communities to defend themselves against potential threats.

Trade and Communication: Salisbury Plain's central location and its close proximity to important waterways facilitated trade and communication between different Stone Age communities.



The benefits to a nomadic approach

Stone Age people did not stay in one place all the time. They were nomadic and moved from one location to another:

Exchange of Ideas and Culture: Through their movement, Stone Age people exchanged ideas, knowledge, and cultural practices with other communities, leading to cultural diversity and innovation.



Vision: We show curiosity about our world and understand our responsibility towards it.

Geography Assessment

Term _____
 Year _____
 Name _____

1. Study figure 1

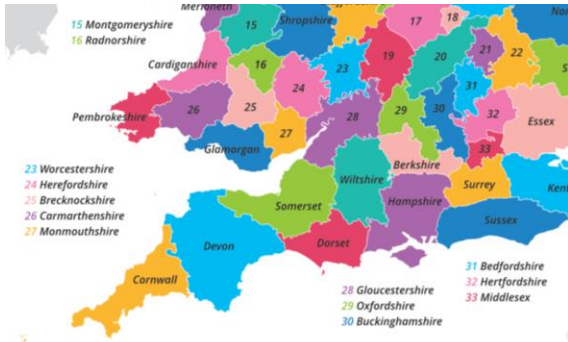


Figure 1

a) Locate Wiltshire on the map.
 b) Is What continent and country is this county from?
 _____ [3 marks]

2. Salisbury Plain is predominately composed of what type of rock?
 _____ [1 mark]

3. An ancient monument lies on Salisbury Plain. What is it called?
 _____ [1 mark]

4. Who began to settle in Salsbury Plains, first?
 _____ [1 marks]

5. Study figure 2 (Salisbury Plains).



Figure 2

Why might people have settled in Salisbury Plains?

 _____ [2 marks]

6. What other benefits did they gain from settling here?

 _____ [2 marks]

END OF ASSESSMENT

/10

Year 3
Summer 2

Human and Physical Geography Year 3 Summer 2 – Rock formation

How was the Giant's Causeway formed?

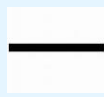


Where is the Giant's Causeway?

Northern Ireland is in the UK (but not Great Britain) and is in Europe and is the smallest country in the United Kingdom.

The Giant's Causeway is located on the north coast of Northern Ireland, in County Antrim.

Grid references are map references indicating a location in terms of a series of vertical and horizontal grid lines identified by numbers or letters:



What is the Giant's Causeway?

The Giant's Causeway is a unique and fascinating natural landmark consisting of about 40,000 basalt columns formed millions of years ago.

It is a UNESCO World Heritage site and is considered one of Earth's great natural wonders.



Legend of Fi McCool

According to local legend, the Giant's Causeway was created by a giant named Finn McCool.

Finn McCool was a giant from Ireland who built the causeway to walk across the sea to Scotland to confront another giant named Benandonner.



How are volcanic rocks formed?

Volcanic rocks are formed from the solidification of molten lava. When a volcano erupts, the lava spews out and cools down rapidly in contact with the air or water. This rapid cooling process causes the lava to harden and solidify, forming volcanic rocks.



The process of formation

Around 50-60 million years ago, there was intense volcanic activity in the area now known as the Giant's Causeway. Lava erupted from the Earth's crust and flowed across the landscape, rapidly cooling and solidifying. As the lava cooled, it contracted and crackled, forming distinctive hexagonal shapes. Over time, these hexagonal columns were further shaped by erosion from the sea and other natural forces. The result is the unique and stunning rock formations we see today at the Giant's Causeway.



Tourist impact

The Giant's Causeway is now a popular tourist attraction and is managed and protected by the National Trust.

Visitors can explore the site and marvel at the incredible rock formations, which range in height from a few centimeters to 12 meters.

There is a visitor center, guided tours and audio guides available to enhance the visitor's understanding and experience.

Visitors can also learn about the local flora and fauna and take part in various educational programs and workshops.

It is important for visitors to respect the site and follow the guidelines for its conservation and protection.



Vision: We show curiosity about our world and understand our responsibility towards it.

Geography Assessment

Term _____
 Year _____
 Name _____

1. Study figure 1

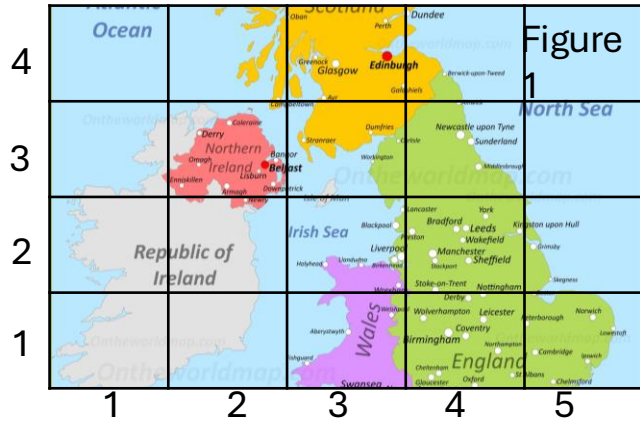


Figure 1

- a) Locate Northern Ireland on the map.
- b) Write down the grid reference Northern Ireland is located in

(,) [2 marks]

2. True or False? Northern Ireland is part of the UK.
 _____ [1 mark]

3. True or False? Northern Ireland is part of Great Britain.
 _____ [1 mark]

4. When was the Giant's causeway formed?
 _____ [1 marks]

5. Study figure 2 (Giant causeway myth and geography).



Figure 2

This figure represents two stories about how the Giant's Causeway was formed.

Explain the Myth and the Geographical formation reason and tell me which is right. [5 marks]

END OF ASSESSMENT

/10