

## Science Overview – 2024/25

Topics in red are provided as recap opportunities during the quiz at the start of each lesson.

	Autumn 1	Autumn 2	Spring 1	Spring 2	Summer 1	Summer 2
Year 3	Light  Plants and Animals Y1	Forces and Magnets  Materials and Seasonal Changes Y1	Animals  Living Things and Their Habitats Y2	Plants  Plants Y2	Rocks  Animals including humans Y2	Working Scientifically  Uses of everyday materials Y2
Year 4	States of matter Animals (Y3)	Animals and Humans Forces and Magnets (Y3)	Habitats  Light (Y3)	Electricity  Plants (Y3)	Sound  Rocks (Y3)	Working Scientifically Use AfL from previous retrieval to set quizzes
Year 5	Space States of matter (Y4) Animals (Y3)	Forces and Working Scientifically Animals and Humans (Y4) Forces and Magnets (Y3)	Forces and Working Scientifically Habitats (Y4) Light (Y3)	Forces and Working Scientifically Electricity (Y4) Plants (Y3)	Properties and Changes of Materials Sound (Y4) Rocks (Y3)	Living Things in their Habitats Use AfL from previous retrieval to set quizzes
Year 6	Animals including humans Space (Y5) States of Matter (Y4)	Light Forces (Y5) Animals and Humans (Y4)	Classification Forces (Y5) Habitats (Y4)	Electricity Properties of Materials (Y5) Plants (Y3) Living		Evolution and inheritance Living Things (Y5) Sound (Y4) Rocks (Y3)

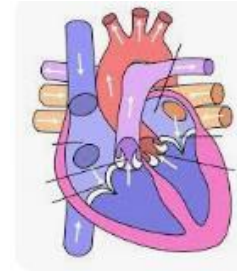
### Last Lesson

Draw a diagram to show how we see.

Remember to include a light source, an object and a person's eyes.

### Last Topic (Animals and Humans)

Label the four chambers of the heart.



**Year 5 (Forces)**

What is gravity?



Gravity is \_\_\_\_\_.

**Year 4 (Animals and Humans)**

Name three parts of the digestive system.

